



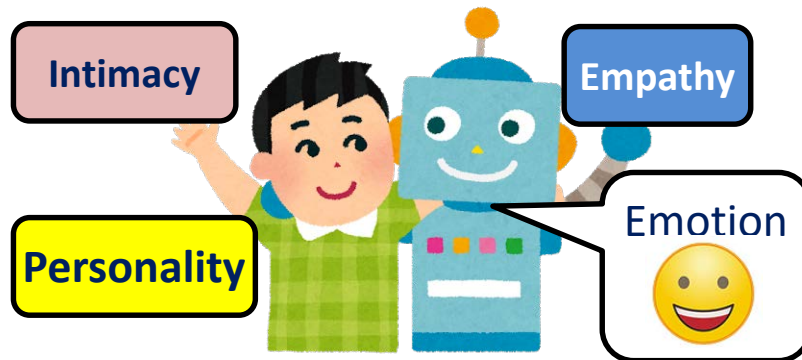
Faculty of
Science and
Technology
Tokushima University

Research on Kansei Information Processing and Kansei Robotics

Associate Professor Kazuyuki, Matsumoto

Human-Friendly Kansei Robot

Understand human emotions,
personalities and relations



Emotion
Estimation

Reputation
Analysis

Personality
Analysis

Conversion of Slang
to Standard Word

Intimacy
Estimation

Analysis of Non-verbal Expression on Web

Application to nursing and caring

Content:

In order to construct human-friendly kansei robots, my research mainly focuses on kansei estimation from language and reputation analysis. Individual messages on Social Networking Sites (SNS) are effective to find out latest trends or public opinions. However, we might miss important information in the analysis due to the words that are not included in the existing dictionaries. Considering that such newly-coined words are often representing personal emotions or the trends of the times, it would be important to construct a dynamic and effective dictionary for reputation/opinion mining analysis. The meanings or frequency of use of the newly-coined words also change depending on the communities in which they are used, and their meanings or tendency of usage receive a lot of influence from the times. Therefore, it would be necessary to adjust the information regarding their sensitivity, usage, degree of importance, etc. properly according to the environments in which they are used. My study deals with how to effectively extract knowledge to automatically construct an effective dictionary that can be updated automatically according to analysis purposes. If the proposed method is realized, more accurate analysis of reputation or flame based on SNS would be possible.

Keywords : Affective Computing, Kansei Information Processing, Kansei Robotics

E-mail: matumoto@is.tokushima-u.ac.jp

Tel. +81-88-656-7654

Fax: +81-88-656-7654

