

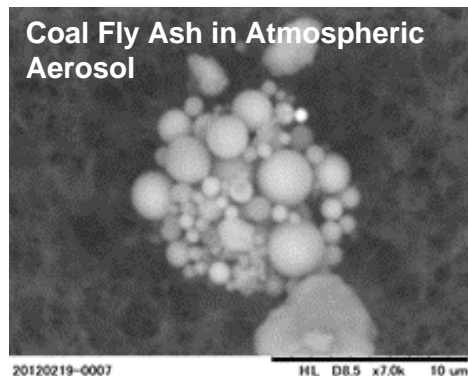


Faculty of
Science and
Technology
Tokushima University

Environmental Analytical Chemistry

Prof. Dr. Shoji IMAI

Figure



Pb Cd
As PM_{2.5}

GF-A.A.S.



Content:

Our research

1. Electrothermal atomization analytical atomic spectro-
metry of trace element
2. Environmental toxic element : Pb, Cd, As, Cr
3. Environmental analytical chemistry
4. Long-range transport of air pollutant.

Scientific and applied research was carried out in environmental science in our Laboratory. Instrumentation and procedures were proposed to the future technologies

for “the **Blue Planet**”.

Keywords : Analytical Atomic Spectrometry,
Environmental chemistry.

E-mail: shoji.imai@tokushima-u.ac.jp

Tel. <+81-88-656-7273>

Fax: <+81-88-656-7273>

<http://pub2.db.tokushima-u.ac.jp/ERD/person/60478/profile-ja.html>

