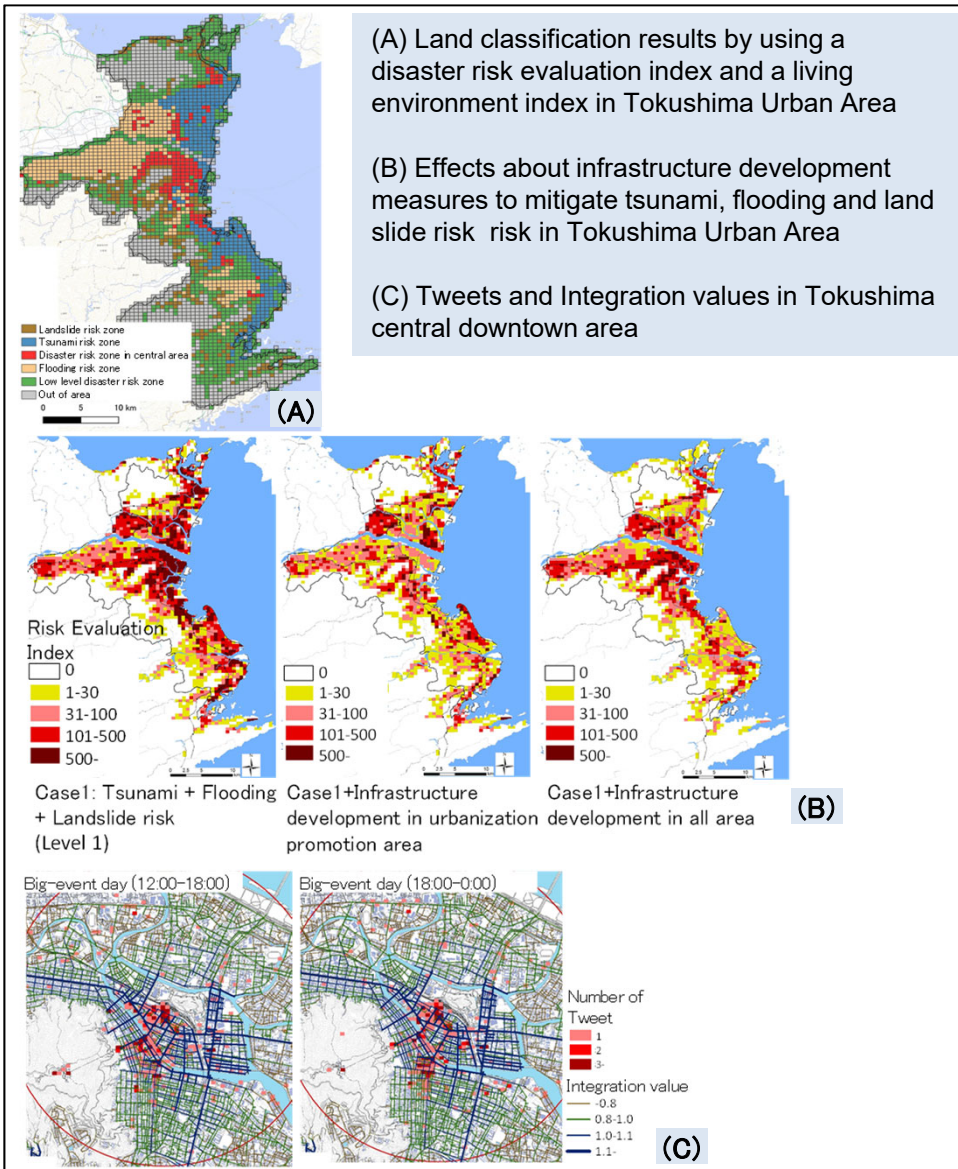




Faculty of
Science and
Technology
Tokushima University

Sustainable Urban Planning and Design by GIS

Associate Professor Kojiro Watanabe



1. Land use planning for sustainable city

Spatial planning and land use strategy focused on sustainable land use in Japanese provincial cities.

2. Urban design utilized regional characteristics

Spatial analysis and planning method for city center and historical district in Japanese provincial cities.

3. Planning support tools utilized spatial analysis and information technology

Data collection, analysis and visualization for suitable decision making about city planning and urban design.

In my research project, data-oriented planning and design method is focused on.

Keywords: Urban Planning and Design, GIS, Land Use Planning, Disaster Mitigation, Green Infrastructure, Area Management, Urban design for historical area, Simulation, Spatial Information Science

E-mail: [kojiro \[at\] tokushima-u.ac.jp](mailto:kojiro@tokushima-u.ac.jp)

Tel. +81-88-656-7612